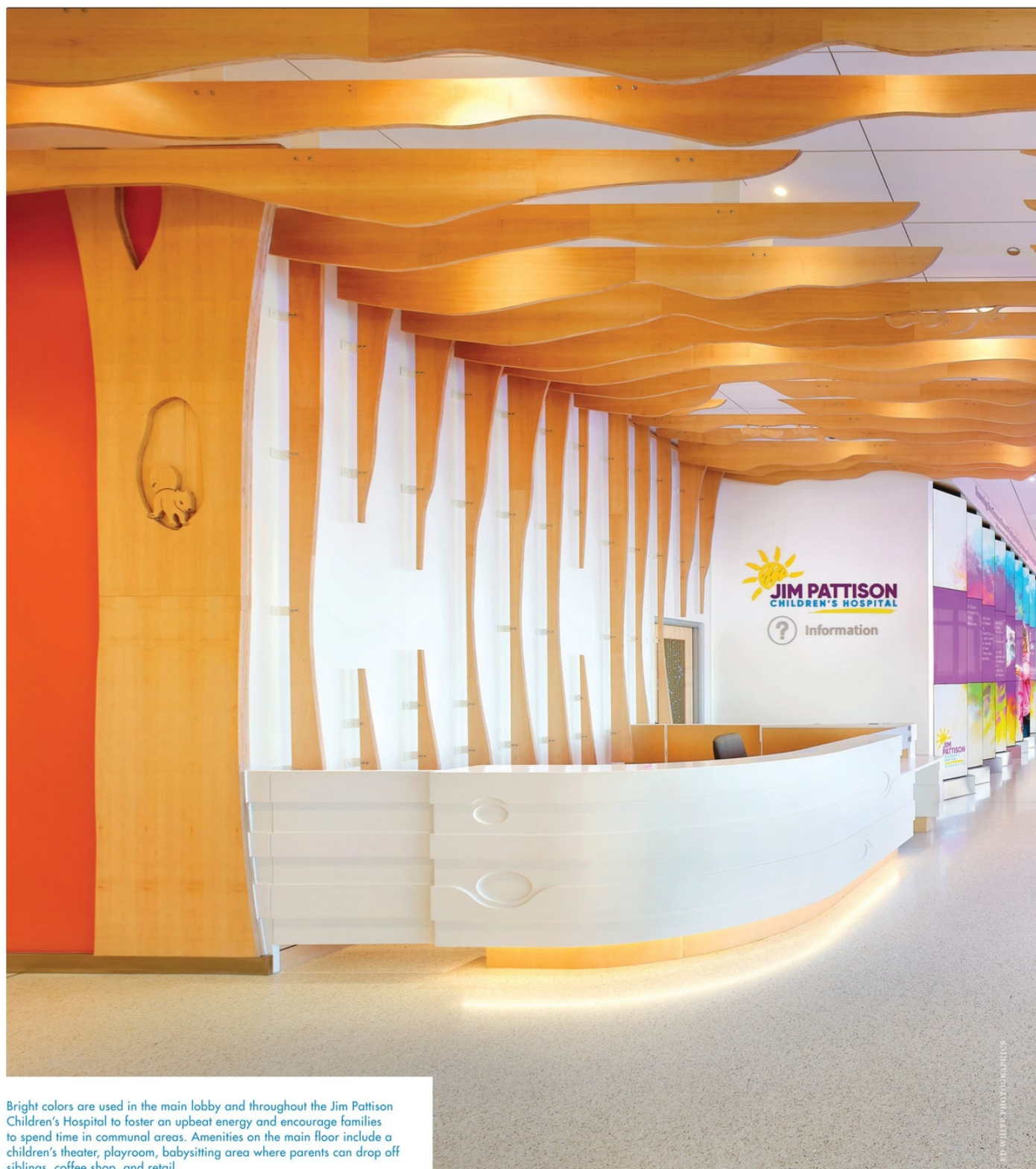


PHOTO TOUR



Bright colors are used in the main lobby and throughout the Jim Pattison Children's Hospital to foster an upbeat energy and encourage families to spend time in communal areas. Amenities on the main floor include a children's theater, playroom, babysitting area where parents can drop off siblings, coffee shop, and retail.

JIM PATTISON CHILDREN'S HOSPITAL



ROOM TO GROW

Jim Pattison Children's Hospital, Saskatoon, Saskatchewan, Canada, completed April 2019

PRIOR TO CONSTRUCTION of the \$285 million, 176-bed Jim Pattison Children's Hospital, Saskatchewan was one of two Canadian provinces without a children's hospital. That left families with the option to travel out of the province to find care or seek treatment for their children at The Royal University Hospital in Saskatoon, which offered limited pediatric and maternal services. However, Royal University faced its own challenges with multiple aging facilities that needed to be replaced and a shortage of beds as demand increased.

In 2007, the provincial government announced plans for a new dedicated children's hospital sited adjacent to Royal University Hospital that would decant and expand pediatric and maternal care from the existing hospital and add a new zoned pediatric and adult emergency department to the new children's hospital. In 2009, the project received \$200 million in capital funding. Construction began in 2014, and the Jim Pattison Children's Hospital opened in April 2019.

The building marked one of the province's first Lean projects and implemented an integrated design process, which included a comprehensive community engagement strategy focusing on children, teenagers, and families across the province to ensure their needs were reflected in the design. The project team, including ZGF Architects (Seattle) and Henry Downing Architects (Saskatoon), visited several remote communities, listening to nearly 2,000 residents through in-person design sessions; additional feedback was gathered via mail-in activities and internet surveys. This process resulted in several design features, including ample family space in the patient rooms and communal areas to accommodate family members during a patient's stay.

User group discussions with clinical leadership, physicians, and staff about the need for departmental adjacencies and greater efficiency also informed the design. For example, the region's high incidence of at-risk births led to the co-location of all maternal services on Level 3, the hospital's largest floor, which provides space for 59 beds. A dedicated maternal OR suite on the maternal floor enables cesarean deliveries, with its own elevator that goes directly to the neonatal intensive care unit (NICU) on Level 4. The maternal floor also includes an antepartum inpatient unit where pregnant women experiencing complications can stay and receive care and an outpatient clinic on the same floor for routine appointments and ultrasounds.

The interior design and environmental graphics are inspired by Saskatchewan's vast, rolling landscape. For example, native flora and fauna motifs aid in wayfinding, while wildlife silhouettes and paw-print decals in exam rooms serve as positive distractions for patients.



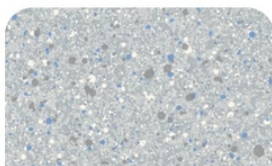
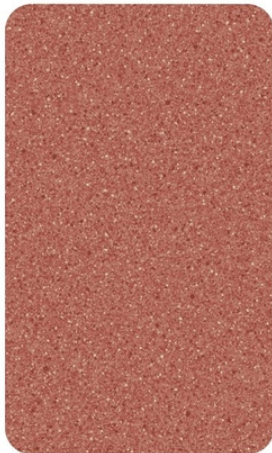
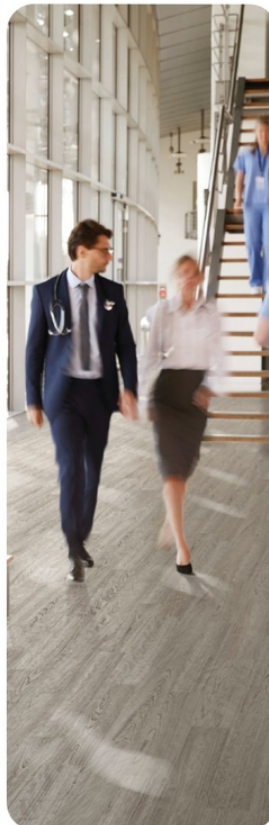
PHOTO TOUR



ABOVE: The maternal care center on Level 3 can support the care of 6,000 pregnant women each year and houses all maternal services on one floor, allowing mothers to labor, give birth, and stay with their new baby and partner in the same private room until discharged. The furniture and fixtures were kept clean and simple, while bright pink graphics support the floor's prairie theme. **RIGHT:** Metal panels on the exterior reflect light throughout the day and seasons, while colorful glass fins on the windows add visual interest and are a playful reminder that this is a children's hospital.



ED WHITE PHOTOGRAPHICS



All new adhesive-free flooring from Altro!

In 2010, Altro invented the world's first adhesive-free sheet flooring, Altro XpressLay. Ten years later, we've combined classic, wood and modern visuals with our revolutionary tape system to introduce two new firsts - Altro Wood adhesive-free and Altro Cantata.

- ✓ No adhesive odors
- ✓ Weld and walk same day
- ✓ Install over existing floors
- ✓ 14dB sound reduction
- ✓ Underfoot comfort
- ✓ Can be reused + recycled



Now that's
revolutionary

discover [altro.com/noglue](https://www.altro.com/noglue)

PHOTO TOUR

PROJECT DETAILS

Facility name: Jim Pattison Children's Hospital

Location: Saskatoon, Saskatchewan, Canada

Completion date: April 2019

Owner: Saskatchewan Health Authority

Total building area: 418,910 sq. ft.

Total construction cost: \$192 million

Cost/sq. ft.: \$458

Architecture: ZGF Architects in association with Henry Downing Architects

Interior design: ZGF Architects

General contractor: Graham Construction

Engineering: Entwistle and Brownlee Beaton Krake (structural); Daniels Wingerak Engineering Ltd. and Affiliated Engineers Inc. (mechanical); WSP and Stantec (electrical)

Builder: Graham Construction

Project details are provided by the design team and not vetted by Healthcare Design.



ABOVE: Level 2 houses the inpatient pediatric unit and PICU—the only one of its kind in Saskatchewan—and includes indoor and outdoor play areas and a school room, giving children their own spaces to play, learn, relax, and be kids. The floor and wall graphics, colored furniture, and light fixtures add visual interest and stimulation for young patients. **LEFT:** Past the main lobby, the pediatric outpatient clinic features a forest theme. The design supports a team-based approach to care, with open-plan caregiver workspace located between patient exam rooms to increase provider interaction and reduce travel distances. ✂